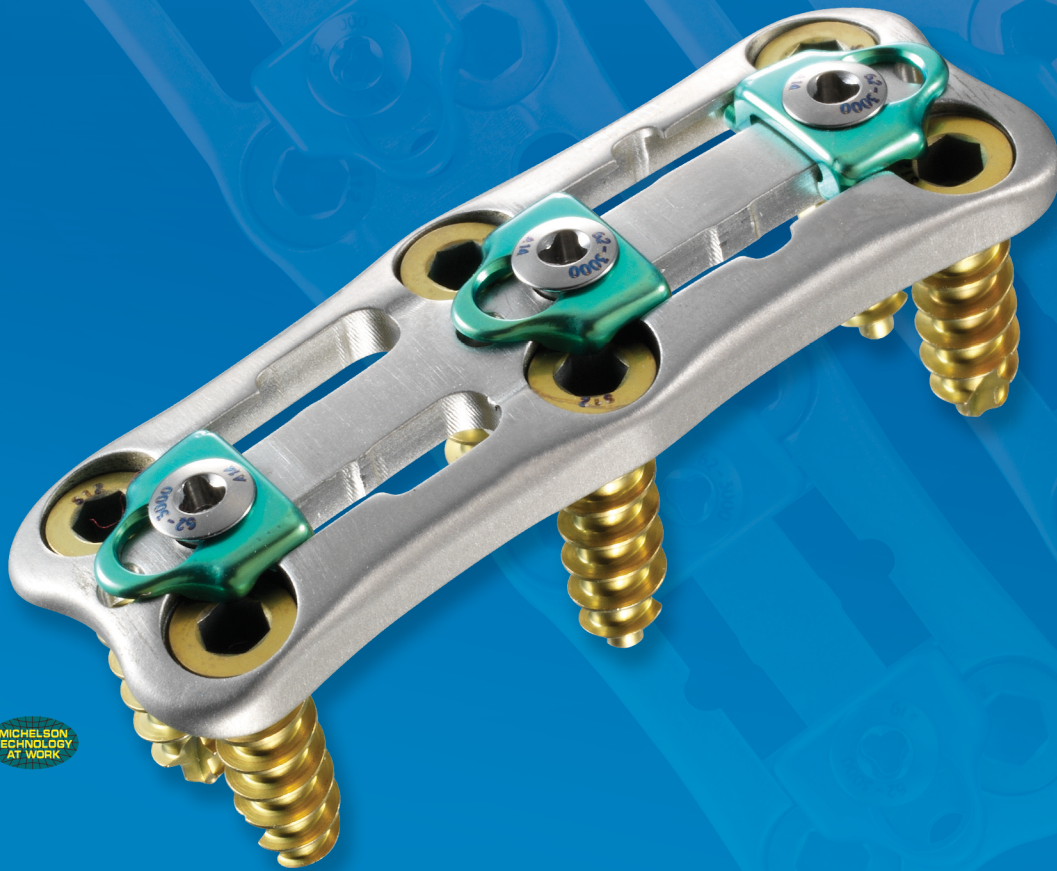




CERVICAL FUSION

Hallmark[®]

Anterior Cervical Plating (ACP) System



MICHELSON
TECHNOLOGY
AT WORK

Hallmark®

Anterior Cervical Plating (ACP) System

THE HALLMARK OF QUALITY WITH A FLEXIBLE PERSPECTIVE

The Hallmark ACP System offers a variety of options for individual patient requirements and precise fixation delivery. The implants and instruments are designed to simplify and reduce surgical time for fast, reproducible results. With a narrow plate width and large plate slots for visual alignment and bone graft confirmation, the Hallmark ACP was developed with expanded implantation opportunities.



Sized to Accommodate a Full Range of Anatomical Sizes

A full complement of cervical plates and color coded bone screws provide a solution for every case, and allow for quick, accurate measurement and implantation.

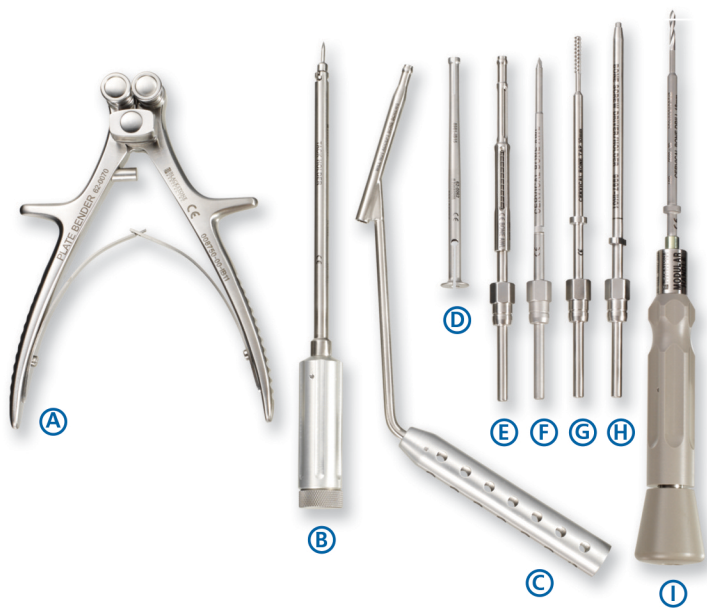


The Right Tools

Easy to use freehand drill guide allows for variable angle bone screw placement. The tactile feel of the freehand drill guide, and its capacity to guide the awl, drill and tap makes precise angulation even easier.

Putting Surgeons First

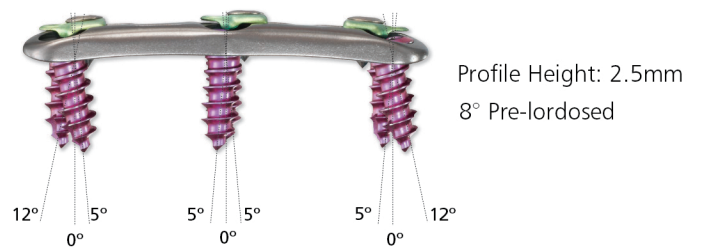
Orthofix develops precise and easy-to-use instrumentation for real-world operating room conditions. Surgeons can make the right choice based on their preference of constrained, semi-constrained or a hybrid construct. The Hallmark ACP System's innovative thinking enables surgeons to utilize adaptable tools for variable angle screw placement. The multi-level implants accommodate individual patient requirements.



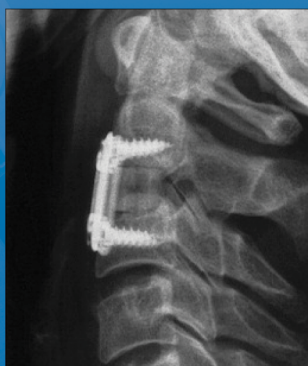
Precision Procedures

The Hallmark ACP System's plates are narrow and engineered to minimize tissue retraction during placement and to optimize comfort in the anatomy. Once fixed, the system's intuitive locking mechanism ensures security and prevents back-out. Clear-cut design with variable bone screw choice gives surgeons a range of options to best suit each patient.

- Narrow plate width (15mm) for minimal tissue retraction
- Color-coded bone screws for constrained, semi-constrained or hybrid constructs
- Low lead-in plate profile (1mm) for easy insertion
- Intuitive plate mechanism for easy locking and unlocking



- A. Plate bender
- B. Cervical tack holder with tack
- C. Freehand drill guide
- D. Top locking screw retainer
- E. Sleeved bone awl
- F. Bone awl
- G. Tap
- H. Bone screw driver
- I. Drill with modular handle



Post-op lateral X-ray

History: 56 y/o male with progressive neck pain and difficulty swallowing. MRI scan showed a large pharyngeal abscess and C2 - 3 discitis with extension of the epidural abscess into the epidural space.

A severe discitis, epidural abscess, and pharyngeal abscess was found, drained, and débrided. Due to the mobility a discectomy, fusion and stabilization was performed. The fusion has gone on to solidify, the patient has no pain, he is swallowing well, and made a dramatic recovery.



Post-op A / P X-ray

INSTRUMENTATION

62-0031	Modular Drill, 10mm	62-0044	Modular Tap, 10mm	62-0033	Modular Bone Awl	62-0070	Plate Bender
62-0032	Modular Drill, 12mm	60-0025	Modular Handle	62-0035	Sleeved Bone Awl	62-0090	System Case
62-0034	Modular Drill, 14mm	60-0050	Bone Screw Driver	62-0060	Top Locking Screw Driver	62-0021	Cervical Tack
62-0036	Modular Drill, 16mm	62-0010	Freehand Drill Guide	62-0061	Torque Limiting Handle		
62-0038	Modular Drill, 18mm	62-0020	Tack Holder	62-0062	Top Locking Screw Retainer		

1 LEVEL CERVICAL PLATES

62-6200	20mm	62-6300	30mm
62-6220	22mm	62-6320	32mm
62-6240	24mm	62-6340	34mm
62-6260	26mm	62-6360	36mm
62-6280	28mm		

2 LEVEL CERVICAL PLATES

62-6380	38mm	62-6480	48mm
62-6400	40mm	62-6500	50mm
62-6420	42mm	62-6520	52mm
62-6440	44mm	62-6540	54mm
62-6460	46mm		

3 LEVEL CERVICAL PLATES

62-6543	54mm	62-6620	62mm	62-6700	70mm	62-6860	86mm
62-6560	56mm	62-6640	64mm	62-6740	74mm	62-6900	90mm
62-6580	58mm	62-6660	66mm	62-6780	78mm		
62-6600	60mm	62-6680	68mm	62-6820	82mm		

4 LEVEL CERVICAL PLATES

62-6744	74mm	62-6904	90mm	62-6106	106mm	62-6122	122mm
62-6784	78mm	62-6980	94mm	62-6110	110mm		
62-6824	82mm	62-6660	98mm	62-6114	114mm		
62-6864	86mm	62-6102	102mm	62-6118	118mm		

SELF-DRILLING/SELF-TAPPING BONE SCREWS

Constrained Primary Screws		Constrained Rescue Screws		Semi-Constrained Primary Screws		Semi-Constrained Rescue Screws	
62-1100	4.1mm x 10mm	62-2100	4.5mm x 10mm	62-3100	4.1mm x 10mm	62-4100	4.5mm x 10mm
62-1120	4.1mm x 12mm	62-2120	4.5mm x 12mm	62-3120	4.1mm x 12mm	62-4120	4.5mm x 12mm
62-1140	4.1mm x 14mm	62-2140	4.5mm x 14mm	62-3140	4.1mm x 14mm	62-4140	4.5mm x 14mm
62-1160	4.1mm x 16mm	62-2160	4.5mm x 16mm	62-3160	4.1mm x 16mm	62-4160	4.5mm x 16mm
62-1180	4.1mm x 18mm	62-2180	4.5mm x 18mm	62-3180	4.1mm x 18mm	62-4180	4.5mm x 18mm

TOP LOCKING SCREW

62-3000	Top Locking Screw
---------	-------------------

Please visit Orthofix.com/IFU for full information on indications for use, contraindications, warnings, precautions, adverse reactions and sterilization.

Caution: Federal law (USA) restricts this device to sale by or on the order of a physician. Proper surgical procedure is the responsibility of the medical professional. Operative techniques are furnished as an informative guideline. Each surgeon must evaluate the appropriateness of a technique based on his or her personal medical credentials and experience.



Orthofix
3451 Plano Parkway
Lewisville, Texas 75056-9453 USA
1.214.937.3199
1.888.298.5700
www.orthofix.com



Medical Device Safety Services (MDSS):
Schiffgraben 41
30175, Hannover
Germany
+49 511 6262 8630
www.mdss.com

Rx Only
CE²⁷⁹⁷

Orthofix products or services referenced herein are trademarks or registered trademarks of Orthofix Medical Inc. and its group of companies. Any rights not expressly granted herein are reserved.