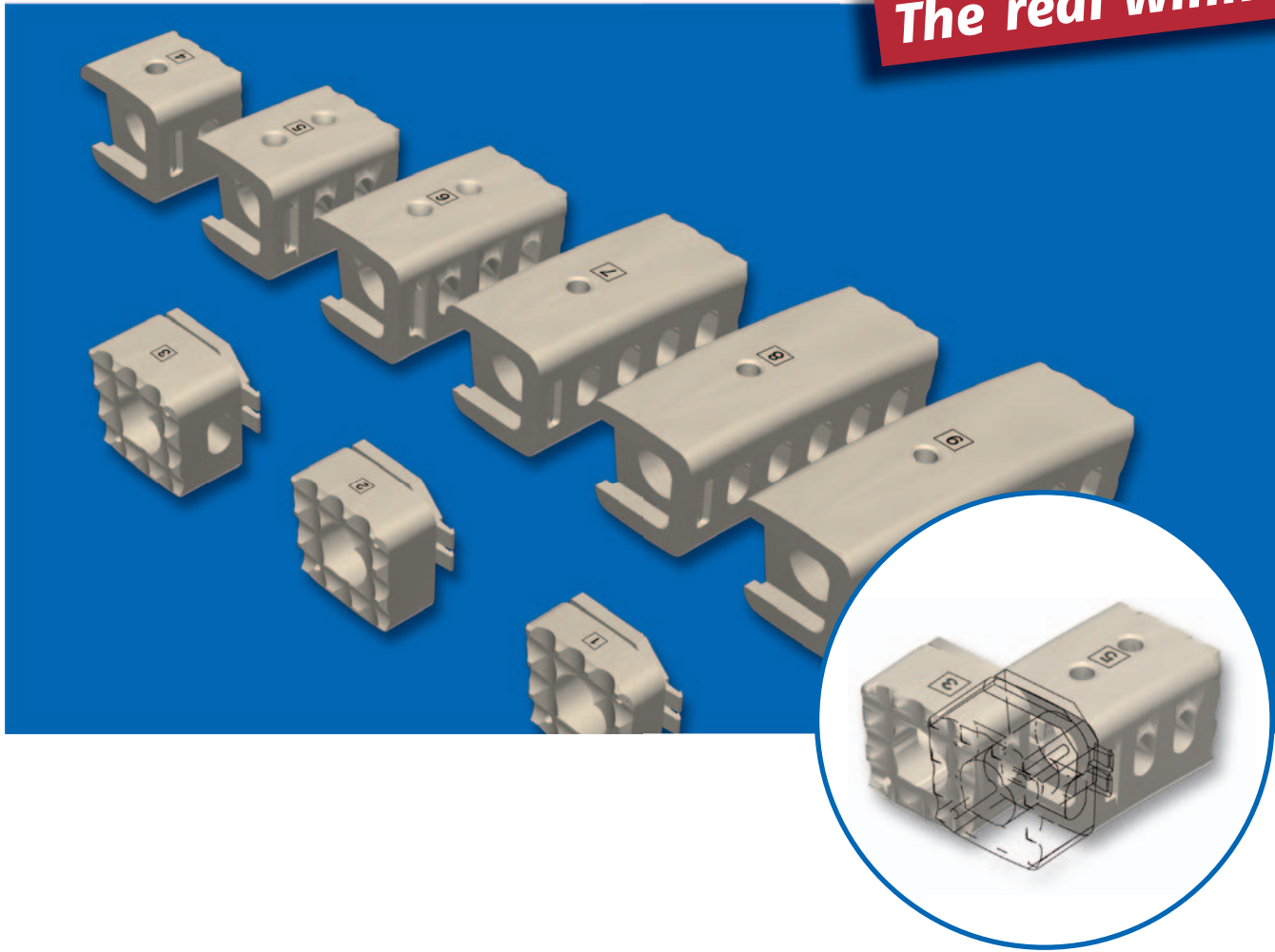




# ATHLET<sup>®</sup>

VBR in PEEK-OPTIMA<sup>®</sup>

**The real winner**



VBR



# ATHLET<sup>®</sup>

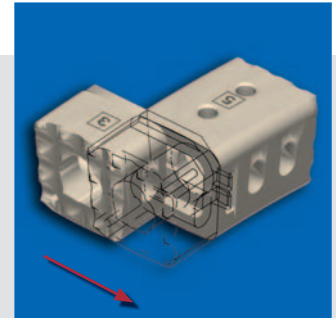
## VBR in PEEK-OPTIMA<sup>®</sup>

A vertebral body replacement requires top performance.

ATHLET (athlitis = Greek for "the contestant") meets this challenge!

Its unique concept combines all required characteristics in one product making it a real winner.

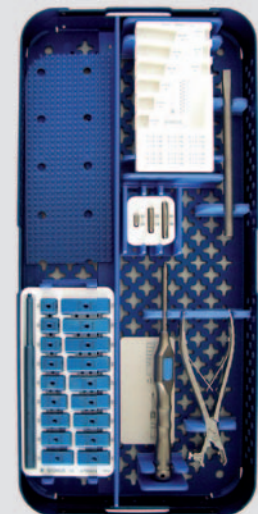
The implantation of ATHLET is performed after corpectomy for instabilities and stenosis due to various origins. ATHLET is contraindicated for severe osteoporosis and partial corpectomy.



1 construct =  
1 main body + 1 end body

### Specific Advantages

- **Manufactured from PEEK-OPTIMA**  
→ Easy positioning and postoperative control
- **Lordotic implant angulation**  
→ Natural reconstruction of the spine
- **Generous fenestration**  
→ Optimal provision for bony in-growth
- **Large contact area, toothed endplates**  
→ High primary and secondary stability
- **Heights from 16 – 50 mm**  
→ Applicable for a broad range of indications and patient anatomies
- **Clearly arranged instrumentation**  
→ Easy handling reduces the risk of complications



ATHLET-Instruments

ATHLET end body		
	Part No.	Height (mm)
1	AT0104	4
2	AT0206	6
3	AT0308	8

ATHLET main body		
	Part No.	Height (mm)
4	AT0412	12
5	AT0518	18
6	AT0624	24
7	AT0730	30
8	AT0836	36
9	AT0942	42

Single, sterile packed, ready to use.

Additional sizes available upon request.

For further information please read the product information or contact your Orthofix representative.



You start – we help  
with our clearly arranged  
Starter Kit:  
Your mobile warehouse with  
all implant components